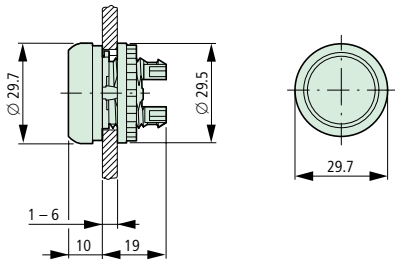


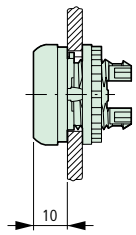
RMQ Titan
Dimensions

Actuators and indicators

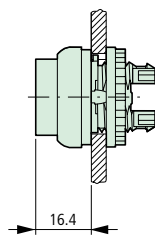


Push-button actuators

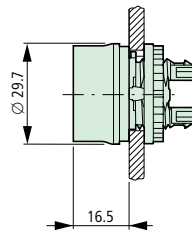
M22-D



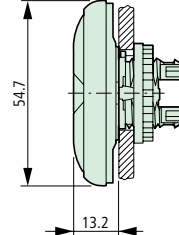
M22-DH



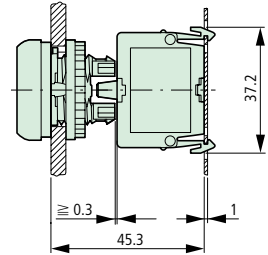
M22-DG



M22-DD

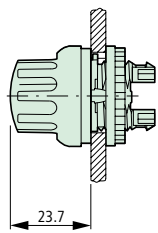


M22-D,
base fixing

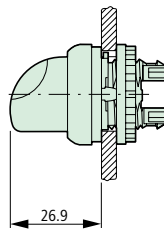


Selector switch actuators

M22-W(R)...

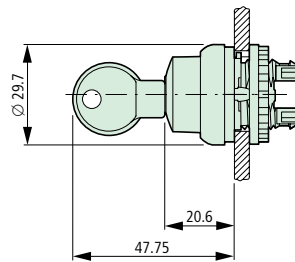


M22-W(R)K...
M22-W(R)LK...



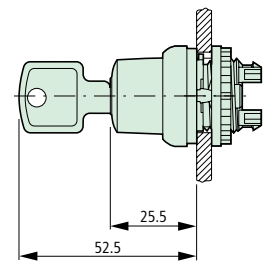
Key-operated actuators
Individual lock mechanisms

M22(S)-W(R)S-(MS...)



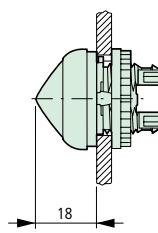
Master key systems

M22(S)-W(R)S-SA...

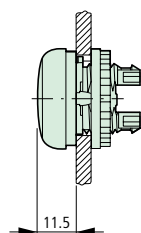


Indicator lights

M22-LH

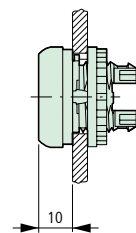


M22-L

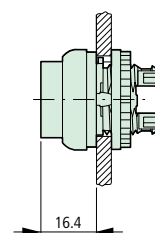


Illuminated push-button actuators

M22-DL

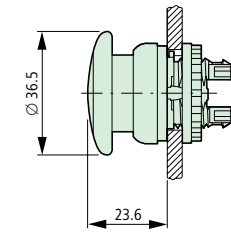


M22-DLH



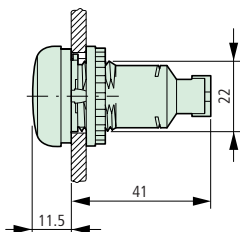
Mushroom actuators

M22-DP

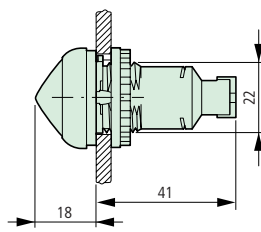


Compact indicator lights

M22-LC-..., M22-AM

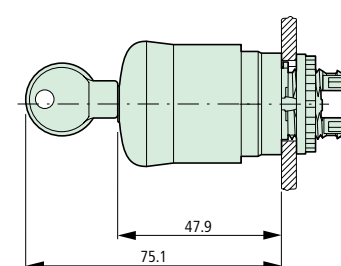


M22-LCH-...



Emergency-Stop actuator

M22-PV, M22S-PV
M22-PVL, M22-PVS-...

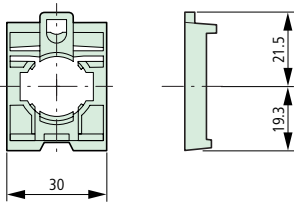


RMQ Titan
Dimensions

Front fixing (style: flush mounting)

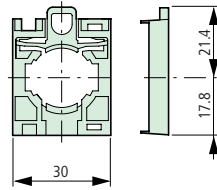
Fixing adapter

M22-A

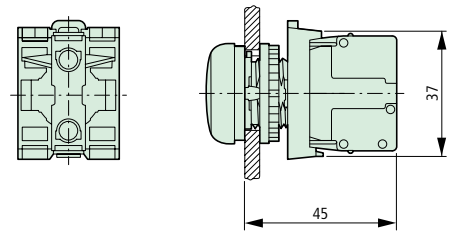


Centring adapter

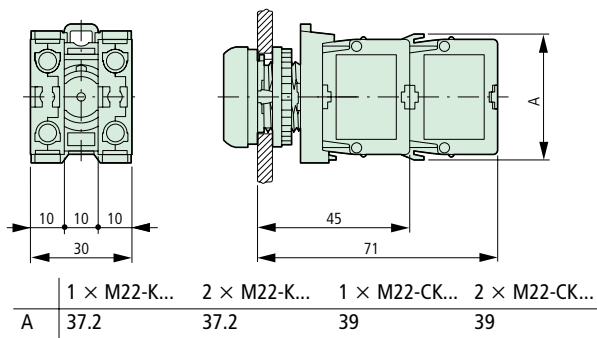
M22-ZA



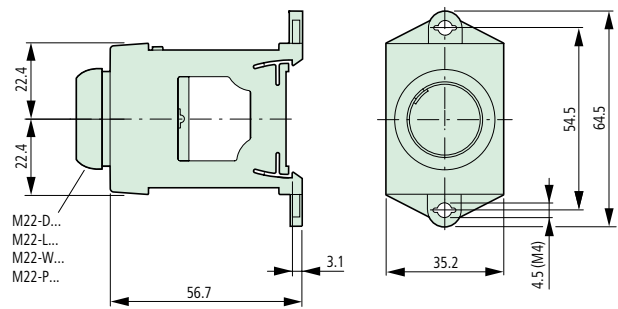
Indicator lights/illuminated push-buttons



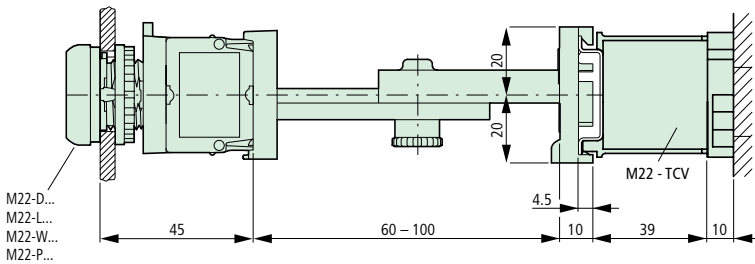
Push-button with M22-(C)K...



IVS top-hat rail adapter

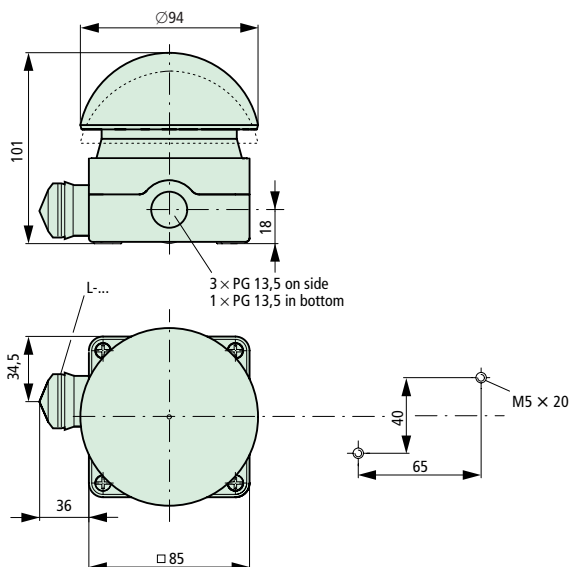


Button, illuminated push-button, indicator light
With telescopic clip



Foot and palm switches

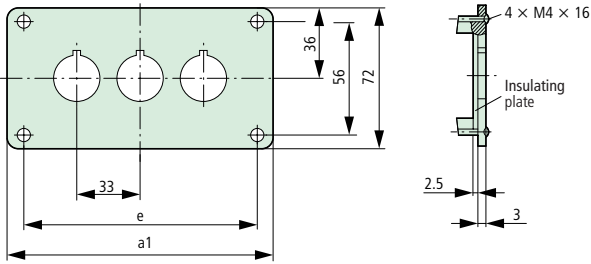
FAK...



RMQ Titan
Dimensions

Front fixing (style: flush mounting)

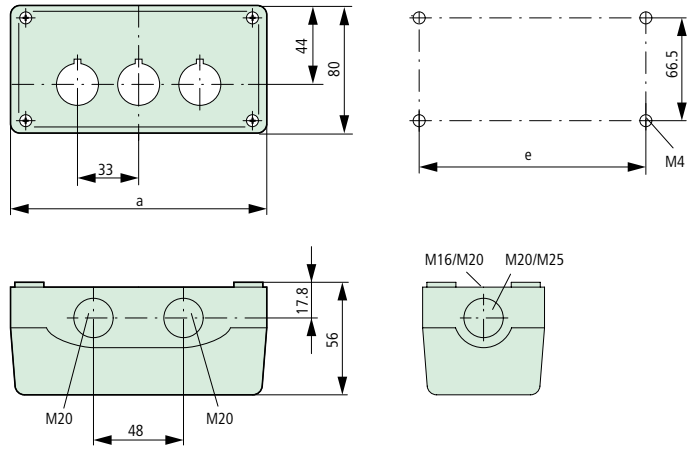
Flush mounting panels
M22-E...



Type	a1	e
E (Y) 1	72	56
E 2	105	89
E 3	138	122
E 4	171	155
E 5	204	188
E 6	237	221

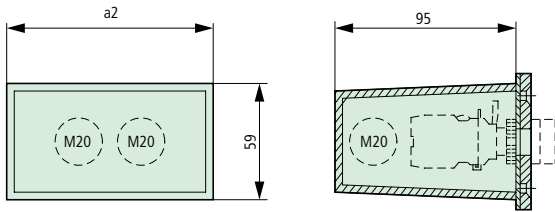
Base fixing (style: surface mounting)

Surface mounting enclosures
M22-I...



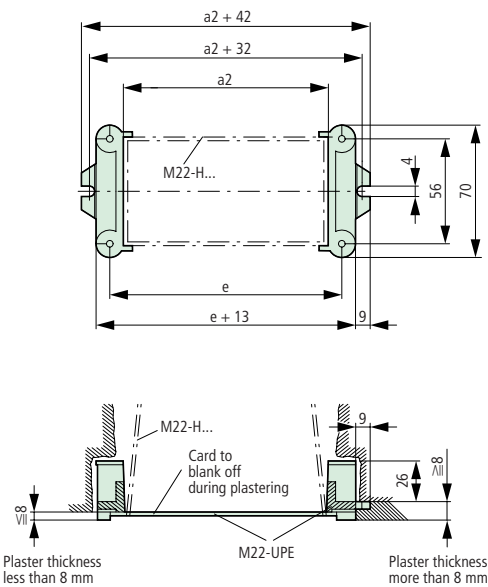
Type	Number of locations	a	e	Cable entries		
M22-I (Y) 1	1	72	58.5	2 x M16	3 x M20	2 x M25
M22-I2	2	120	106.5	2 x M16	3 x M20	2 x M25
M22-I3	3	153	139.5	2 x M16	2 x M25	4 x M20
M22-I4	4	186	172.5	2 x M16	2 x M25	4 x M20
M22-I6	6	252	238.5	2 x M16	2 x M25	4 x M20

Shrouds
M22-H...

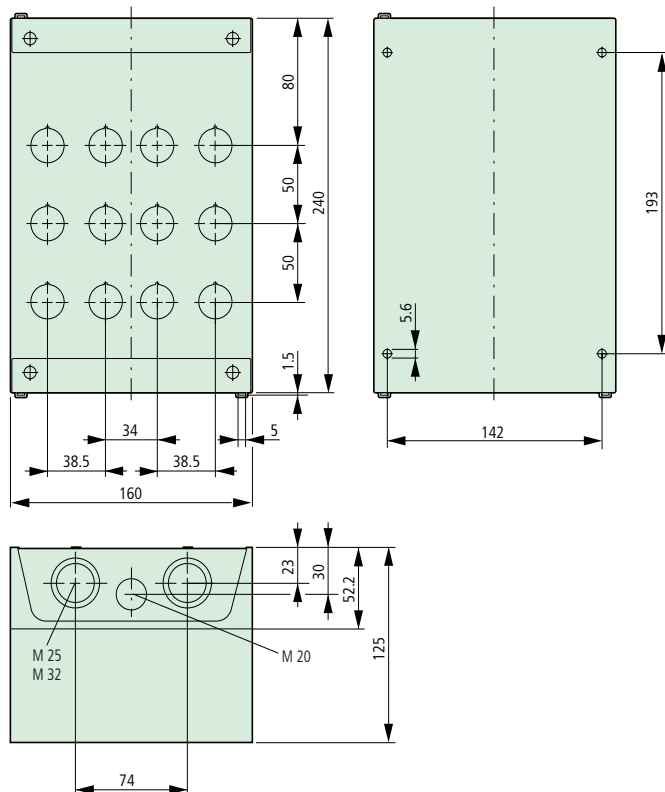


Type	a2	Cable entry	Style
H 1	42	3 x M20	One-part
H 2	75	4 x M20	
H 3	108	4 x M20	
H 4	141	4 x M20	Multi-part
H 5	174	5 x M20	
H 6	207	6 x M20	

Shroud with plaster keys
M22-UPE



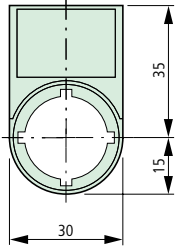
Surface mounting enclosures, 12 locations
M22-I12



RMQ Titan
Dimensions

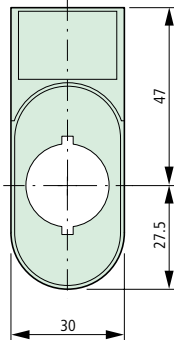
Label mounts

M22-ST



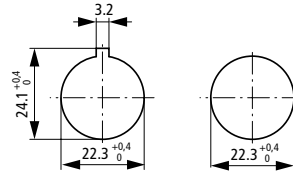
Grid dimensions to IEC/EN 60 947

M22-STDD

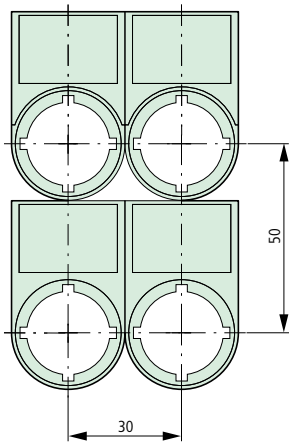


Minimum grid dimensions

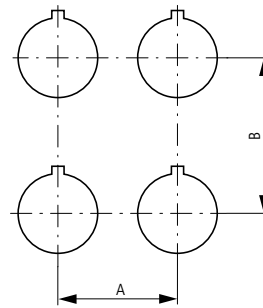
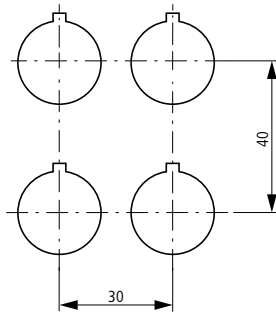
Mounting holes with/without lug slot



Grid dimensions for various combinations



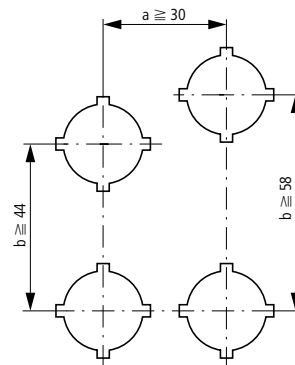
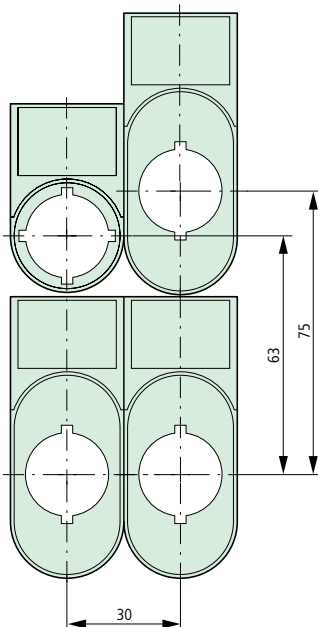
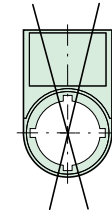
Grid dimensions for M22-DD...



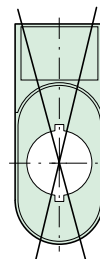
	A ≧	B ≧
IEC/EN 60 947	30	50
RMQ Titan min.	30	40
D + T-D	33	
DP	37	
D+DP	30	
PV	38	
PV+PL-PV	48	56
DD	30	55
DD+T-DD	33	58
DD+STDD	30	75

Grid dimensions for QDD double actuators plus MT-DD diaphragms

Do not use actuator diaphragms with label mounts, since the label mounts do not comply with IP67.



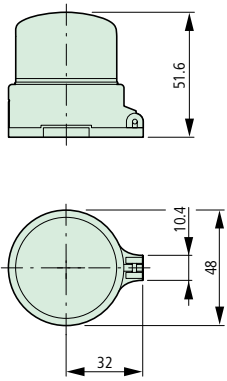
Do not use actuator diaphragms with label mounts, since the label mounts do not comply with IP67.



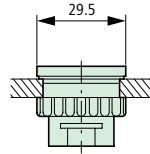
RMQ Titan
Dimensions

Accessories

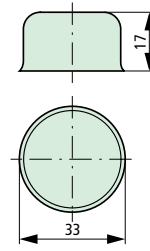
M22-PL-PV



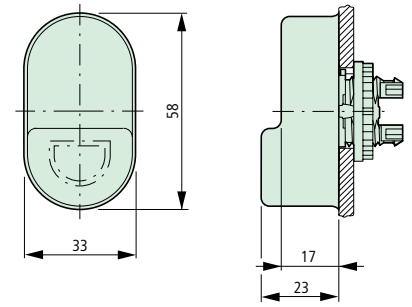
M22-B



M22-T-D

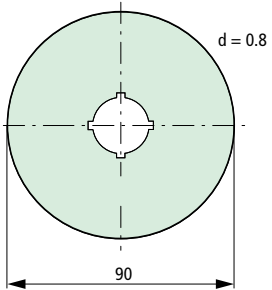


M22-T-DD

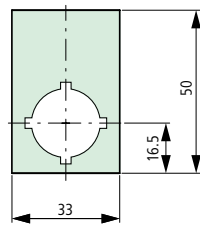


Emergency-Stop label

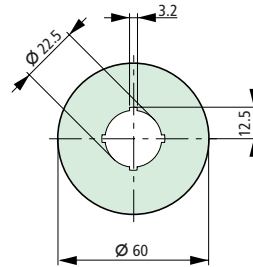
M22-XAK



M22-XZK...



M22-XBK1



M22-XYK1

